



12 KM



SANTA EULÀRIA DES RIU
IBIZA
MARATHON



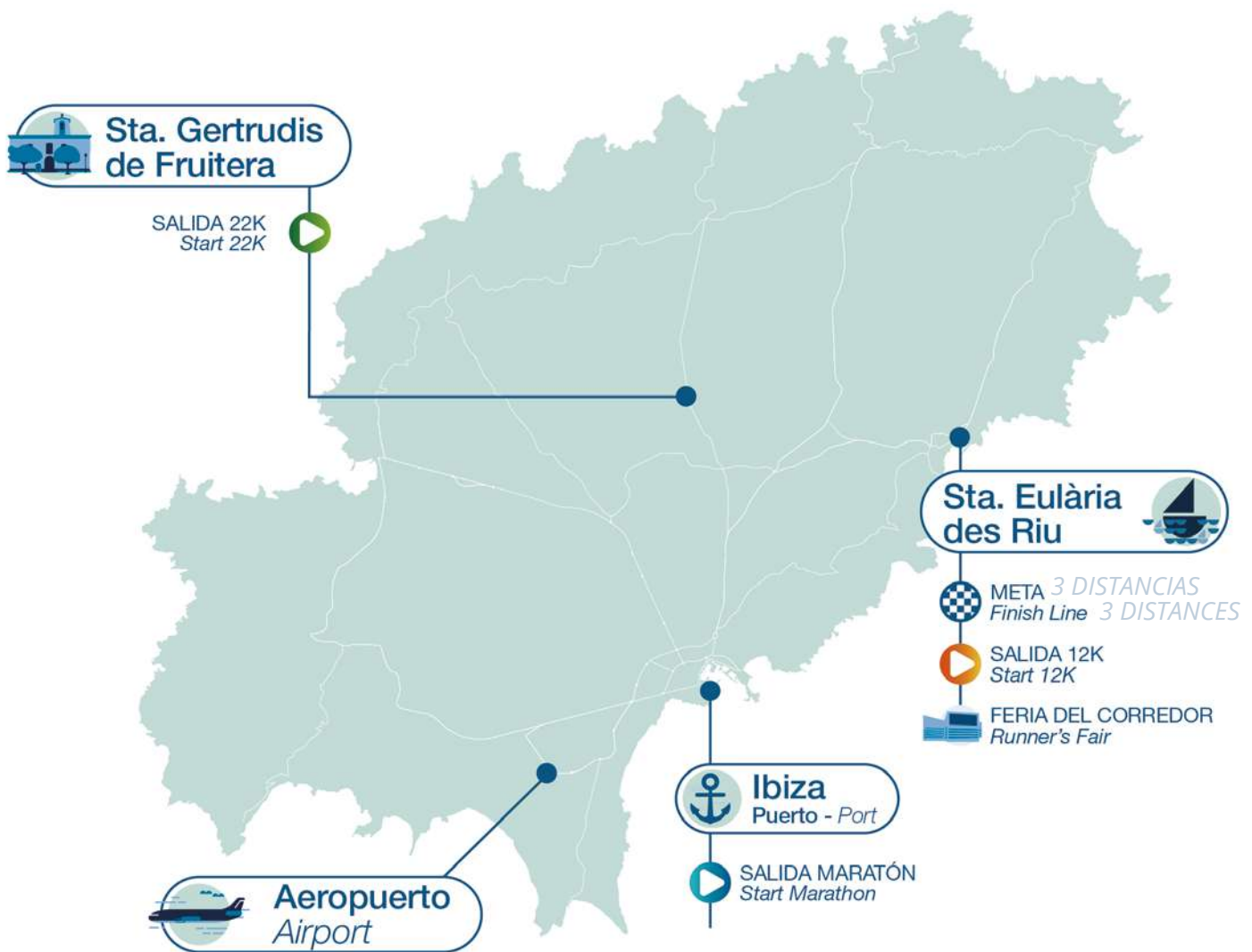
12K

RUNNER'S GUIDE

13 ABRIL 2024



POINTS OF INTEREST



12K STARTING LOCATION

Click on [here](#) to open the location on Google Maps of the Santa Eulària Ibiza 12K STARTING LOCATION



12K CIRCUIT

APRIL 13 2024

START 5:15 pm



TRACK DOWNLOAD

To correctly display the track of the circuit
you must have previously installed on your device
the Google Earth application.



RUNNER'S FAIR



The **Santa Eulària Ibiza 12K Runner 's Fair** takes place at the **Palacio de Congressos de Ibiza**, in Santa Eulària.

**Avenida, Salvador Camacho, 9-11,
07840 Santa Eulària des Riu**

OPENING HOURS

FRIDAY APRIL 12

10:00 am - 8:00 pm
Uninterrupted hours

SATURDAY APRIL 13

9:00 am - 1:00 pm
Uninterrupted hours

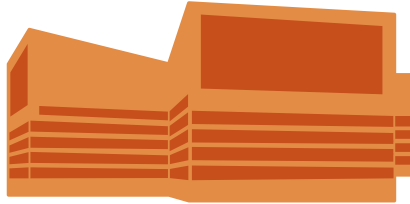
Click on here to open the **Google Maps** location of the **Santa Eulària Ibiza 12K RUNNER'S FAIR**



FAIR LOCATION

123

BIB COLLECTION



The collection of bib numbers for the **Santa Eulària Ibiza 12K** will take place at the Runner's Fair.

THE BIB WILL INDICATE ON ITS DESIGN

1. Assigned bib number
2. Start time
3. Starting box
4. Medal engraving (If purchased)
6. Emergency telephone number



WHAT DO YOU NEED TO PICK UP YOUR BIB?

1

You will need your **ID card** and your **bib number**, which you will receive by e-mail, also you will be able to see it in the lists at the Runner's Fair. If you are going to pick up the bib number of another person, it is compulsory to present a photocopy **of their ID and an authorisation signed by both of you.**

IMPORTANT INFORMATION

2

After the closing of the Runner's Fair **a last minute bib pick up point will be open until 4:30 pm** at the entrance.



FAIR LOCATION



RUNNER'S BAG

OFFICIAL 12K T-SHIRT



Made by our technical brand **Joma**, according to the highest standards of quality and technology, essential aspects that a technical running product must have.

They are made of 100% recycled polyester, a fabric that is made from reused sources, especially PET bottles, which is converted into raw material. **This reduces CO2 emissions by 75% and avoids the use of petroleum.** The benefits of this fabric include **lightness,**

breathability and resistance in order to optimize the comfort of each runner.

In addition, in the **Santa Eulària Ibiza 22K** runner's bag, as well as in posmeta, you will find gifts and products to offer you the best possible experience:





OFFICIAL APP



[IOS DOWNLOAD](#)



[ANDROID DOWNLOAD](#)

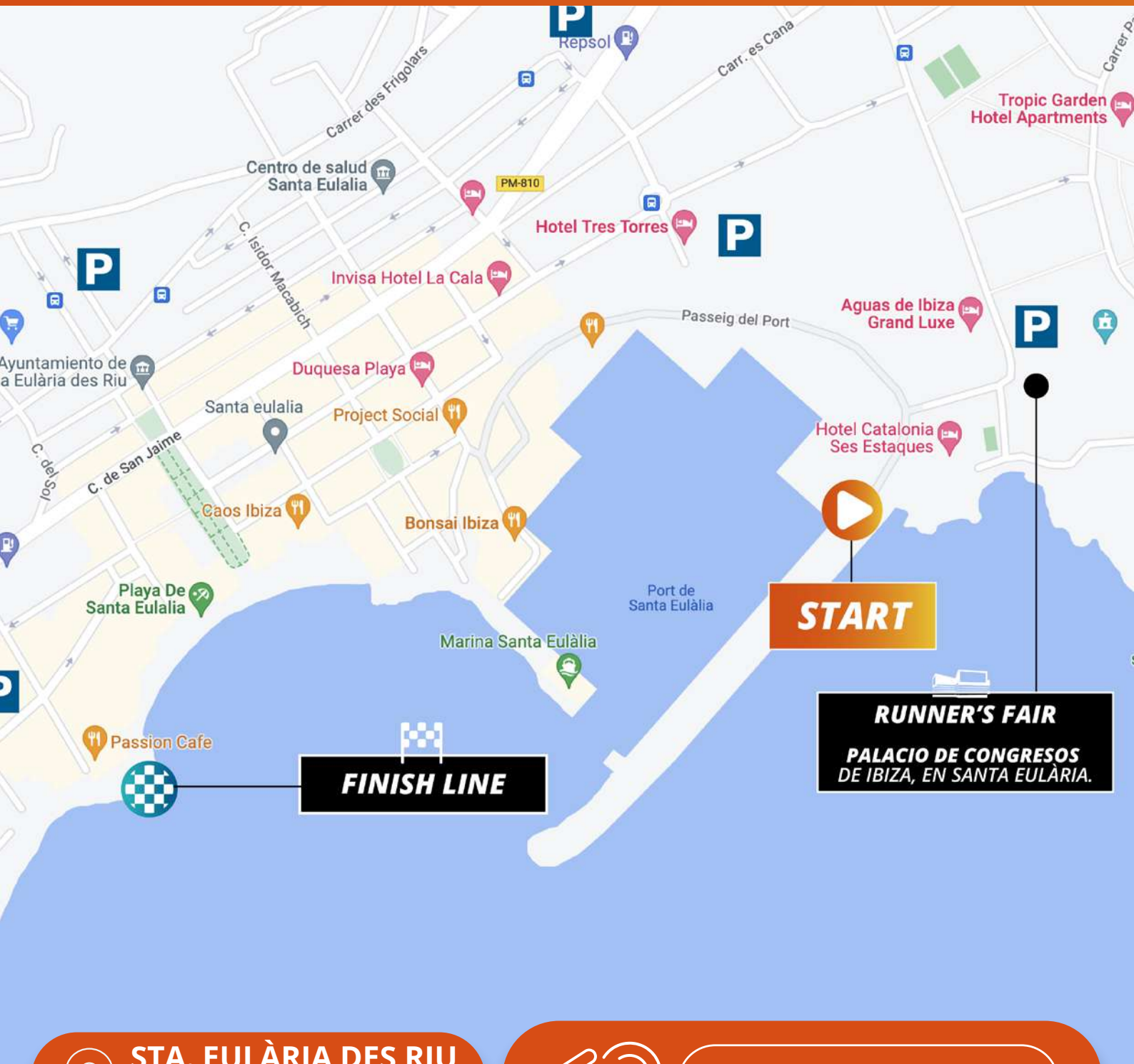
DOWNLOAD THE OFFICIAL RACE APP

Download the app and follow the course live during the race.

Available for **IOS and Android**, you will be able to know information about the destination, follow the race, see times and standings, check the information of the race, know the bib number and much more.



STARTING AREA



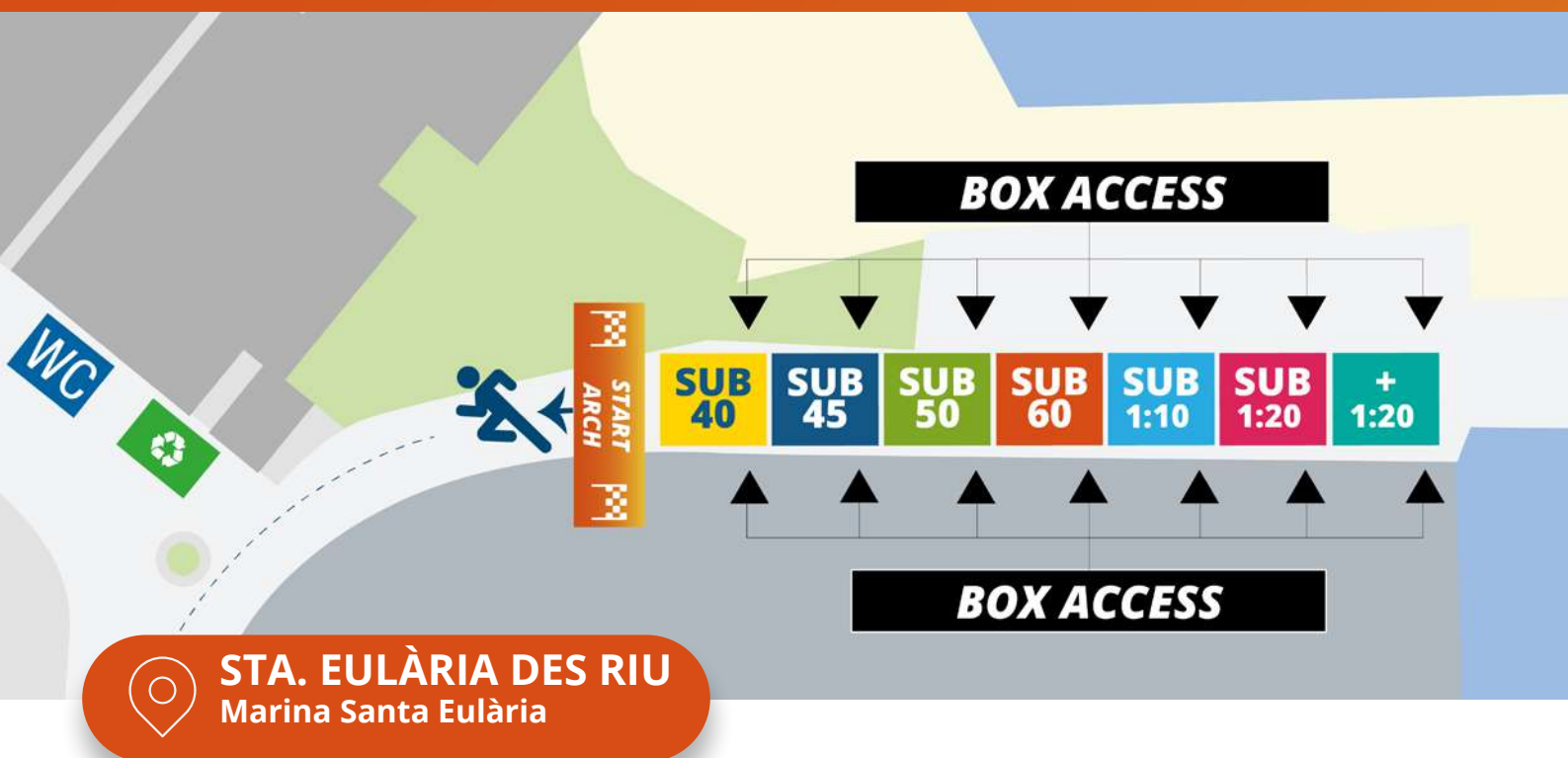
 **STA. EULÀRIA DES RIU**
Marina Santa Eulària

 **START LOCATION**

Click on [here](#) to open the **Google Maps** location of the **Santa Eulària Ibiza 12K STARTING LOCATION**



START



STARTING BOXES AND MARKS



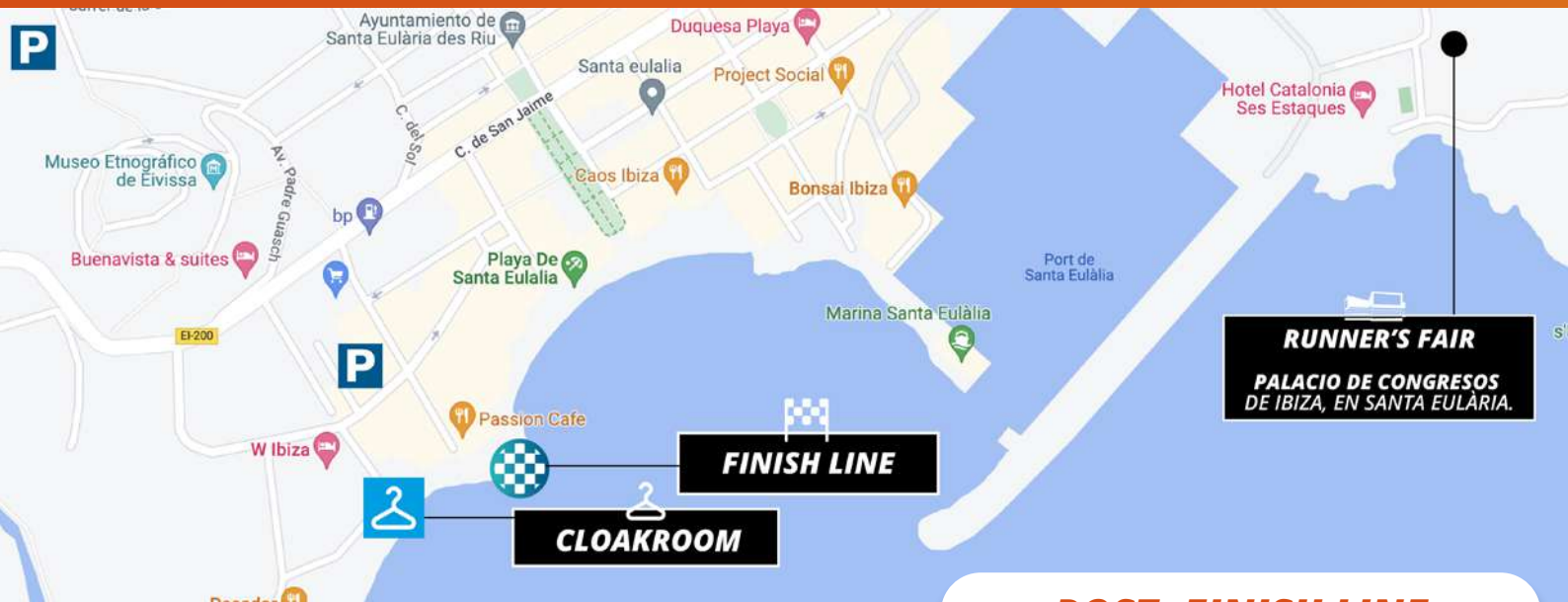
*Each colour corresponds to the respective starting box mark.

INFORMATION TO BE TAKEN INTO ACCOUNT

- 1 There will be start **boxes depending** on the mark selected on the registration form.
- 2 **Please arrive well in advance**, taking into account road closures and the previous access to the starting boxes.



FINISH LINE AREA



POST-FINISH LINE

INFORMATION TO BE TAKEN INTO ACCOUNT

In the post-finish area will be given to the participants of the 22K a **thermal blanket and solid and liquid supplies.**

In the final part of the post-meta the **finisher medal** will be given. Near that point you will find the medal **engraving service.** If you purchased it at the time of registration, it will be marked on your race bib.



FINISH LINE LOCATION



STA. EULÀRIA DES RIU

Passeiga Marítim / Desde calle Juan Tur Tur a calle Es Riu



IMPORTANT INFORMATION ON RACE



There are more than **500** people involved in the organization of the event. Please respect the indications of the **staff, security forces, medical teams and volunteers** in order to guarantee the correct running of the race and to be able to enjoy together the best sporting experience.



Along the route you will find signposted **kilometers 5 and 10**.



The entire route is marked with **arrows and signs**.



The finish line closes at **9:00 pm**

RUNNER SERVICES IN RACE



Liquid **refreshment** points combined with others of **liquid + solid**. There will be a point at kilometers **5, 7 and 10**.



Timing service and dorsal chip.



Recycling bins on the race and finish line.



Accessible chemical **toilets** at the start and finish line.



Photo services of your participation in the race.

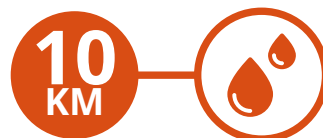
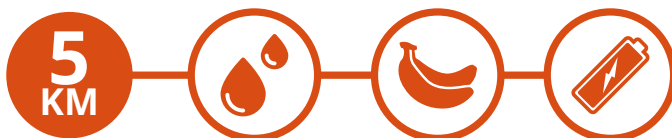


Entertainment and announcer speaker at the start and finish line, as well as throughout the race.



First AIDS service.

REFRESHMENTS ON RACE



AQUARIUS

FINISHER
SALUD Y NUTRICION DEPORTIVA
KERN

WATER



CLOAKROOM DROP-OFF AND PICK-UP



STA. EULÀRIA DES RIU

Passeig Marítim esquina con Carrer Des Riu

Together with the race bib, you will be given the **cloakroom label** that will be personalized with the race bib number. You must stick it on the bag of belongings you wish to leave in the cloakroom.

Remember that you can only leave a medium size bag.

Participants of the **Santa Eulària Ibiza 12K** can leave their belongings at the Cloakroom located at the **start** in **Santa Gertrudis**.

Once the race is over and when **leaving the post-finish area**, the participants of the **Santa Eulària Ibiza 12K** will be able to pick up their belongings at the Cloakroom, located at **Passeig Marítim corner with Carrer Des Riu**.

To collect the belongings it will be necessary to show the bib number.

OPENING HOURS

SATURDAY APRIL 13

4:00 pm - 9:00 pm



CLOAKROOM LABEL



SERVICIOS AL CORREDOR



► MEDICAL CARE

A large number of medical ambulances along the route reinforced with medical services on motorcycles.

Field hospital located next to the finish line.

Volunteers will coordinate the event and comply with safety regulations.



► MEDAL ENGRAVING

All the participants have the option of taking home a unique souvenir of the **Santa Eulària Ibiza 22K** by being able to purchase the **medal engraving** at the time of registration.

Also this service can be paid at the Runner's Fair and at the post-finish area for **10€.**



► POST-FINISH LINE REFRESHMENTS

The finishers will have a **post - finish refreshment** where they will be given a bag with liquids and solids.



► PHOTOGRAPHIES

The photos **will be available 24-48 hours after the end of the event** and can be searched by bib number or by pace times.

The price of the photo pack is **26,99€** and you will have an average of **10 photos** each. Available for pre-purchase (*before the race*) for **21,99 €**.

We will send you a **newsletter** the days after the event with the link when the photos are available. There is an **after-sales service** by **CanoFotoSports** to solve

any problems that the runner may have when purchasing the photos.

Also we will have **official photographers** who will take snapshots of various moments of the race and that you can find **on our website and social networks of the event**.



OTHER INFO OF INTEREST



SOLIDARITY SUPPORT TO APNEEF

The organization of the **Santa Eulària Ibiza Marathon**, alongside people with special needs, **APNEEF (Asociación de Personas con Necesidades Especiales de Ibiza y Formentera)** has become the solidarity organization of the seventh edition of the race. Thus all the participants have had the option of **making a contribution of 2€** during the registration process, the contribution will go entirely to finance this non-profit organization.



VOLUNTEERING

Always follow the instructions of the volunteers and respect them (at the Runner's Fair, at the star boxes, in the post-finish area...) We all know how important their work is for everything to go well. If they tell you something we ask you to comply with their instructions.

RECOMMENDED PARKING AREAS



On Saturday, April 13 from 3:00 pm. to 9:00 pm. there will be different traffic cuts due to the sporting event.

Use the recommended parking areas.

TAXI
PARADA TAXI - C. Sant Vicent (Sta. Eulària)
 Radiotaxi Eivissa: 971 39 84 83
 Radiotaxi Sant Josep: 971 80 00 80
 Radiotaxi San Antoni: 971 34 37 64
 Radiotaxi Santa Eulària: 971 33 33 33
 Radiotaxi Sant Joan: 971 33 33 33

PARKING
PARKING 1 Polideportivo Municipal Sta. Eulària.
PARKING 2 Calle Salvador Camacho.
PARKING 3 C. de Sant Jaume - C. César Puget Riquer. Acceso recomendado hasta las 16:30 h. Salida de vehículos restringida hasta las 20:30 h.
PARKING 4 C. Pare Vicent Costa. Acceso recomendado hasta las 16:30 h.
PARKING 5 C. Joaquín Gadea. Acceso recomendado hasta las 16:30 h.
PARKING 6 C. Historiador Clapés
PARKING 7 Carrer de s'Església - C. Margarita Ankerermann. Parking de pago.
PARKING 8 C. Venda des Colome - Puig de Missa.
PARKING 9 C. Doctor R. Curtóys G. - C. Joan Tur Tur. Acceso recomendado hasta las 16:30 h.



SUSTAINABILITY



**WE NEED YOUR HELP
TO TAKE CARE OF IT!**

**THE MAGIC ISLAND IS A NATURAL PARADISE
THAT WE WANT TO CONTINUE ENJOYING
FOR MANY YEARS TO COME.**

We will have **different types of containers** to facilitate the separation of waste. They will be distributed at the **refreshment points, start and finish areas.**

If a runner spills outside the containers distributed at the refreshment points, **he/she may be disqualified** by the organization.



**RESPECT THE
ENVIRONMENT,
YOUR EFFORT MATTERS
FOR A MORE
SUSTAINABLE WORLD.**



At the refreshment points, **drinks will be delivered in biodegradable cups.** Please dispose of them in the indicated container to facilitate their collection.

Be especially careful **with thermal blankets, as they are very light and can end up in the sea.** Place them **tightly rolled up in the yellow containers** and close the lid when you put them in.



SUSTAINABLE DEVELOPMENT GOALS AND TARGETS

In September 2015, world leaders defined **17 Sustainable Development Goals (SDG)** to walk, together, towards a better, fairer and sustainable world and sustainable world.

These common goals require everyone's collaboration.



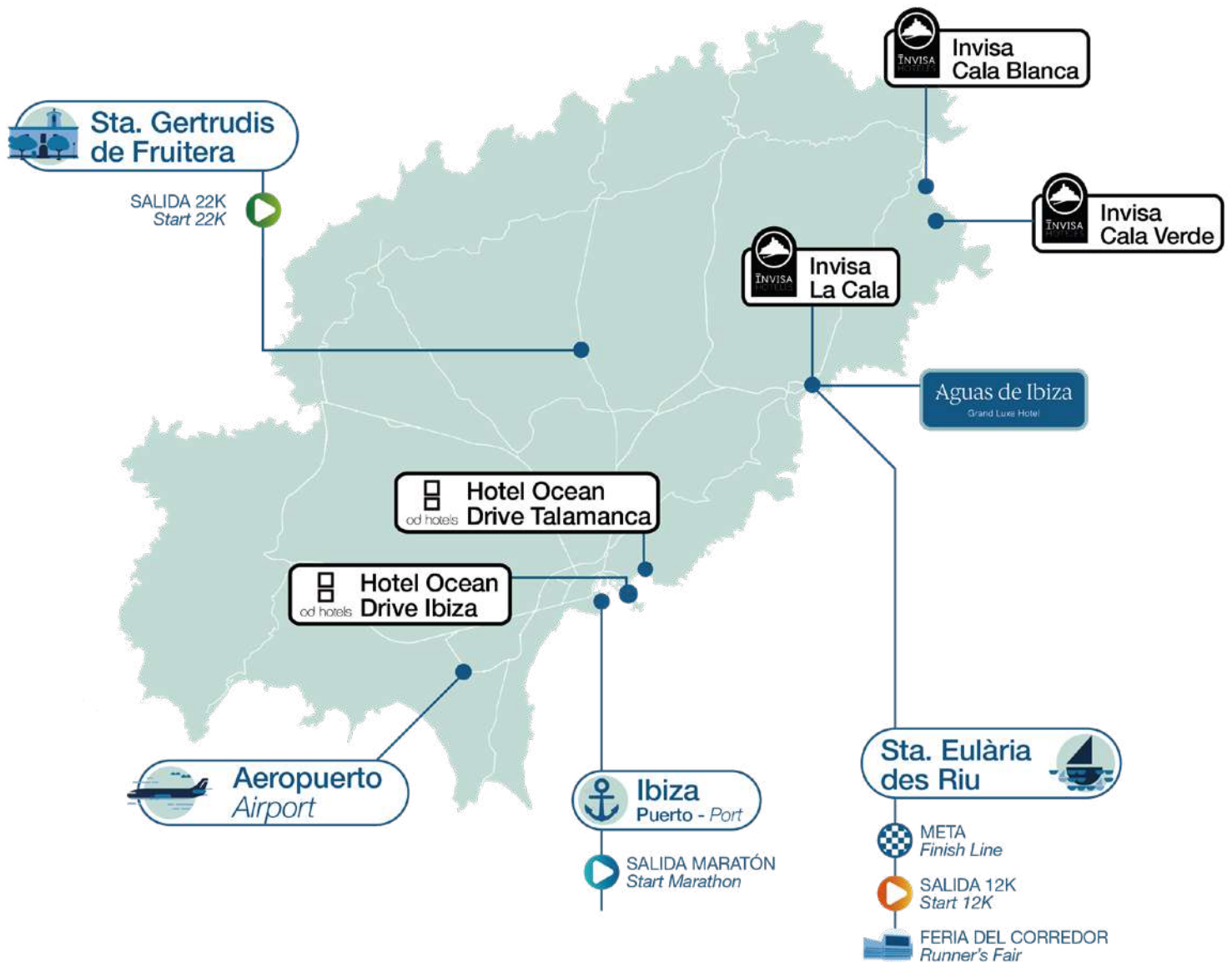
- 1** We promote accessibility for runners in an inclusive environment.
- 2** We work towards social integration by promoting equal and inclusive participation through our commitment to APNEEF.
- 3** We develop specific actions to promote female participation.
- 4** We promote local culture and gastronomy by integrating them into the Runner's Fair and promoting them among runners and companions.
- 5** We promote the local economy by involving local businesses in the project.
- 6** We design and execute a recycling and waste classification plan.
- 7** We promote sustainable mobility for workers and participants.
- 8** We use local and seasonal products.
- 9** We digitalize informative and promotional materials.
- 10** We make available to everyone an APP with information about the event.
- 11** We implement actions to evaluate the satisfaction of athletes.

THIS IS OUR COMMITMENT, JOIN US!



OFFICIAL HOTELS

RunAndFeel



In the following map you can see the location of our official hotels located in **Ibiza** and **Santa Eulària des Riu**, as well as the **Marathon, 22K and 12K starts and finish line**.



OFFICIAL PARTY

Run And Feel

Hard Rock

HOTEL

IBIZA

**THE BEST MUSIC IN A
UNIQUE ENVIRONMENT.**

**THE HARD ROCK
HOTEL IBIZA.**

The finish line of the **Santa Eulària Ibiza Marathon** is not the end of your experience on the magical island, so don't let the pace stop! Because we are waiting for you at the **Run and Feel Party** located in the heart of the **Hard Rock Hotel Ibiza** to celebrate, together, that you are already part of the Run and Feel family.

From **21:00 to 00:30 h** the mythical stage of the **Hard Rock Hotel Ibiza** becomes the stage for an outdoor party where you can enjoy the best music. Exclusive party with free access for all participants of the **Santa Eulària Ibiza Marathon**, with the wristband included in the racepack.

For the bravest, **the party will continue on the Third Floor of the Hard Rock!** Just a few meters from the stage to dance together until the early hours of the morning. And if you want to be accompanied...

With free access to all registered, **the companions can purchase a ticket with a drink. They will be available at the Merchandising stand at the Runner's Fair.**



The Runner's Fair is located at the **Palacio de Congresos de Ibiza** in **Santa Eulàriu des Riu.**

OPENING HOURS

FRIDAY APRIL 12

SATURDAY APRIL 13

10:00 am - 8:00 pm

9:00 am - 1:00 pm



HARD ROCK LOCATION

Click on [here](#) to open the location in **Google Maps** of the official **#RunAndFeel party at HARD ROCK HOTEL IBIZA**



SANTA EULÀRIA DES RIU

IBIZA 12K

#RunAndFeed

SATURDAY APRIL 13

TALENTUM

Joma

Trasmed
UNA PASADORA DEL GRAN CONSUME

HÍ IBIZA®

USHUAÏA
BEBIDA

Coca-Cola

FUNDACIÓN
PACHA

od hotels

Aguas de Ibiza
Grand Luxe Hotel



CaixaBank

Renault
Punicauto

GOLDCAR

SportLife

CORREDORÀ

FINISHER
SALUD Y NUTRICIÓN DEPORTIVA
KERN

Fandango
FORMENTOSA



WELEDA
Seit 1921



VITAMIN WELL

Can Bufe

HARIBO

brillante

Sabors
IBIZA 12K

Bahia
Apartamentos

Garden
hotels

cooltra



AETIB
Associació d'Entitats
Turístiques d'Ibiza



Consell
d'Eivissa



FECOEV

